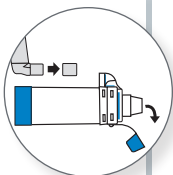
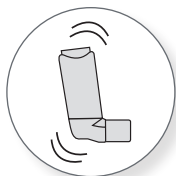


Quick Start Guide: Instructions for Use

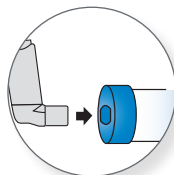
1 Remove MDI and mouthpiece caps.



2 Shake MDI.



3 Insert MDI into chamber.

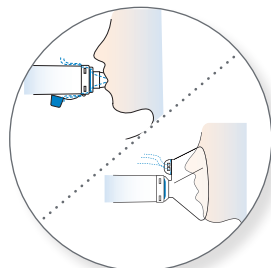


These are abbreviated instructions for use, please remember to read the complete instructions that are packaged with your AEROCHAMBER PLUS® FLOW-VU® Anti-Static Valved Holding Chamber (aVHC) device.

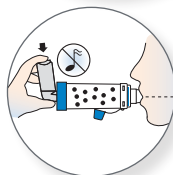
AEROCHAMBER PLUS® FLOW-VU® aVHC



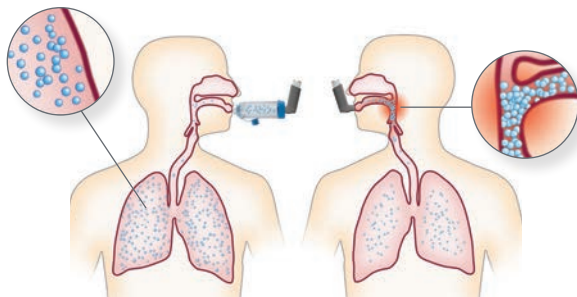
4 Apply mouthpiece or mask to face.



5 Press MDI, inhale slowly and hold breath for 5 to 10 seconds or breathe 2 to 3 times. (For mask, count for 5 to 6 breaths).



6 Repeat steps 2 to 5 as prescribed.



Using Inhaler with aVHC:
Medication reaches lungs

Using Inhaler Alone:
More medication collects in mouth and throat (potential for side effects)

AEROCHAMBER PLUS® FLOW-VU® aVHC



Large Mask

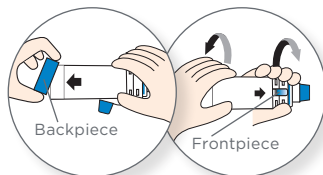
Mouth-piece

Medium Mask

Small Mask

Quick Start Guide: Cleaning Instructions

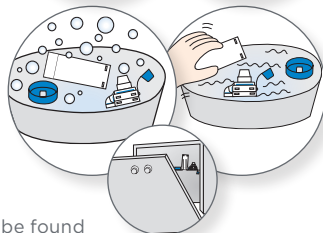
1 Remove front and back pieces.



Backpiece

Frontpiece

2 Soak 15 minutes in soapy water, agitate gently and rinse or place in dishwasher on top rack.

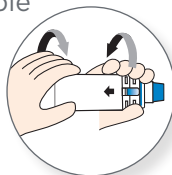


Dishwasher instructions can be found with the complete instructions packaged with your AEROCHAMBER PLUS® FLOW-VU® aVHC.

3 Shake out water and dry vertically.



4 Reassemble pieces.



These are abbreviated cleaning instructions, please remember to read the complete instructions that are packaged with your AEROCHAMBER PLUS® FLOW-VU® aVHC device.