



AeroVent® CHC

Collapsible Holding Chamber
Monaghan Medical Corporation
5 Latour Ave. Suite 1600
Plattsburgh, NY 12901



This device was Made in the USA.

Part No.	Description	Case
PN 85950	AeroVent® CHC	cs/50
PN 85950A	AeroVent® CHC with adapter	cs/50

The **AeroVent®** Collapsible Holding Chamber (CHC) provides the means of efficiently delivering MDI packaged drugs into a ventilator breathing circuit.

CAUTION: The AeroVent® CHC is designed for use only in the inspiratory limb of a breathing circuit. Use of the AeroVent® CHC in any other part of the breathing circuit is not recommended.

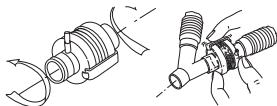
- SINGLE PATIENT USE ONLY
- DO NOT STERILIZE
- CHANGE WITH CIRCUIT
- DO NOT REUSE

CAUTION: Federal Law restricts this device to sale by or on the order of a physician.

INSTRUCTIONS FOR USE

To connect the **AeroVent®** CHC in a ventilator circuit

1. Remove the **AeroVent®** CHC from its package. Insert the **AeroVent®** CHC between the inspiratory limb of the ventilator circuit and the patient wye, taking care not to deform or crush the bellows. If applicable, install the supplied adapter between any standard 22mm ID and 22mm OD fittings (i.e. breathing circuit tubing or patient end of the **AeroVent®**) to parallel wye connector. The MDI receptacle port must be distal to the patient and pointing vertically upward.



CAUTION: To avoid circuit disconnects, insure that connections are properly secured as intended.

2. Collapse the **AeroVent®** CHC by gently pushing the ends together, using a slight rotating motion. While holding the ends together, engage the external latch mechanism as shown in the diagram above:

CAUTION: To prevent air leaks caused by an opened AeroVent® CHC, ensure that the positive latch closing is securely in place when the AeroVent® CHC is in the closed position.

To use the **AeroVent®** CHC for administering drug

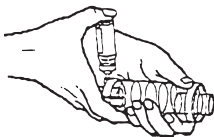
1. To expand the **AeroVent®** CHC, disengage the external latch mechanism by depressing the center of the latch while lifting as shown by the arrows. Swing the latch 180° towards the MDI end.



2. Insert the MDI canister nozzle (already well shaken) into the MDI receptacle port of the **AeroVent®** CHC being careful not to discharge the MDI at this time. The MDI receptacle has been designed to accept virtually all plastic and metal nozzle MDI canisters.

NOTE: Please note that while **AeroVent®** CHC mechanically accepts MDI canisters with integrated dose counter technology, the **AeroVent®** CHC is not designed to activate any dose counter mechanism.

3. Hold the open bellows in your hand maintaining a straight horizontal position. At the onset of inspiration or as you first feel the bellows expand actuate the MDI by pressing on the concave base of the canister. A physician or other qualified health care profession shall prescribe the number of actuations.



CAUTION: Use only enough force to actuate the MDI. Excessive force may cause the MDI nozzle to become jammed in the **AeroVent®** CHC, MDI receptacle port. Damage may result.

4. Upon completion of the medication administration, remove the MDI canister from the **AeroVent®** CHC.

NOTE: With use it is normal that the inside of the bellows may appear cloudy due to accumulation of moisture and/or drug.

5. Collapse the **AeroVent®** CHC by gently pushing the ends together using a slight rotating motion. While holding the ends together, engage the external latch mechanism.

NOTE: The MDI receptacle end will rotate when the **AeroVent®** CHC is expanded for use. Rotational position should be checked for access to the MDI receptacle before use, as the MDI must be discharged vertically downward.