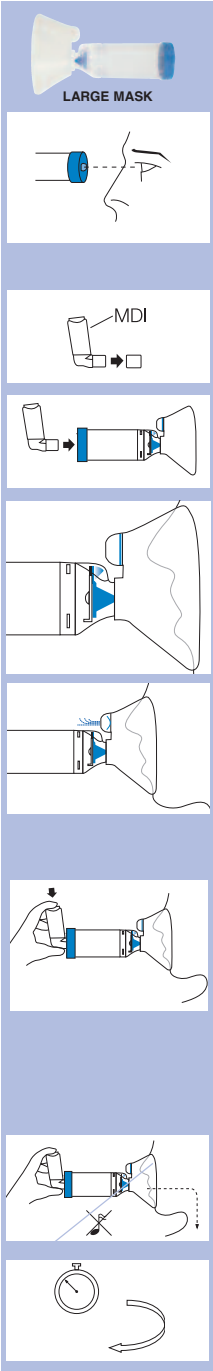


Directions for Use (Single Patient Use Only)

Product Reorder Number
Large VHC- PN 80810



ENGLISH

Prior to use, carefully examine the product for proper assembly, foreign objects and damaged or missing parts. Ensure the mask adapter assembly is properly secured to the chamber body. Remove any foreign objects prior to use. The product should be replaced IMMEDIATELY if there are any damaged or missing parts. If necessary, use the Metered Dose Inhaler (MDI) alone until a replacement is obtained. If the patient's symptoms worsen, please seek immediate medical attention.

Remove cap from the MDI. Before use, ensure the instructions supplied with the MDI have been read.

Shake the MDI immediately before each use as per the instructions supplied with MDI. Insert the MDI into the back piece of the chamber.

Apply mask to face and ensure there is an effective mask/face seal by watching the movement of the **Flow-Vu®** Inspiratory Flow Indicator. As the patient inhales through the chamber, the brightly colored flow indicator should move toward the patient, providing visual feedback that an effective mask/face seal has been obtained.

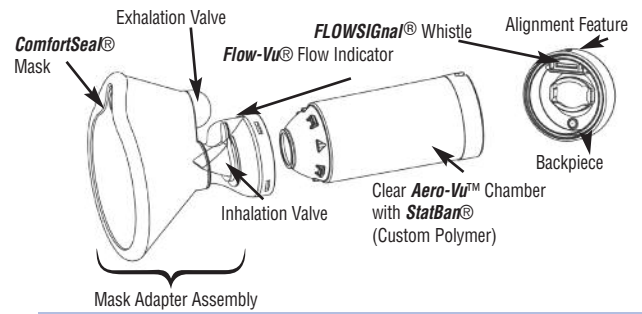
While maintaining an effective mask/face seal, the patient should exhale through the mask. The **Flow-Vu®** Inspiratory Flow Indicator will return to the vertical position when the patient stops inhalation or exhales. The exhaled breath exits the chamber through the Exhalation Valve mounted in the mask.

The MDI should be depressed as the patient begins a slow inhalation. Use the **Flow-Vu®** Inspiratory Flow Indicator to assist in the coordination of this maneuver. When the Flow Indicator starts to move toward the patient, this is the correct time to depress the MDI canister. Maintain the effective mask/face seal and ensure an additional 2-3 breaths are taken through the chamber before administering another puff of medication.

Ensure only one puff of medication is administered at a time and that the physician's dosage instructions are followed.

Slow down inhalation if you hear the **FLOWSignal®** Whistle sound.

Follow instructions supplied with the MDI regarding the amount of time to wait before repeating instructions 3–6 as prescribed.

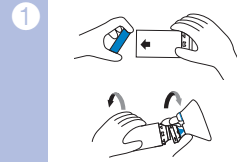


Cleaning Instructions



ENGLISH

The **AeroChamber MAX®** VHC should be cleaned weekly, following the instructions provided below.



Remove the flexible backpiece and the mask adapter assembly as shown.

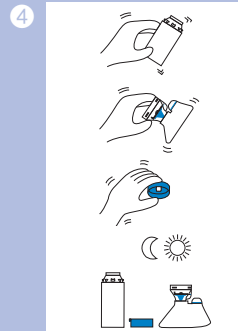
Do not remove the mask from the mask adapter assembly.



Soak the 3 parts for 15 minutes in a mild solution of liquid dish detergent and lukewarm clean water. Agitate gently.



Rinse parts in clean water.

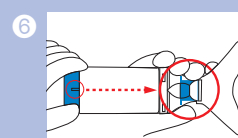


Shake out excess water from the 3 parts and allow to air dry as shown.

Ensure parts are dry before reassembly.



To reassemble, fit the Mask Adapter assembly on the end of the chamber and twist firmly until components securely lock into position.



Center the alignment feature on the flexible backpiece with the flow indicator and exhalation valve as shown. Press firmly to seat backpiece.

Cautions

- Read all instructions before use.
- Do not leave **AeroChamber MAX®** VHC unattended with children.
- Do not disassemble the product beyond what is recommended in the cleaning instructions or damage may result.
- If unsure on how to use this product, talk to your physician or pharmacist or Health Care provider.
- The **AeroChamber MAX®** VHC is a medical device. To ensure proper performance it should only be cleaned according to these instructions. It should NOT be cleaned in a dishwasher.

Notes

- Storage and Operating Range: 40°F - 105°F at 15-95%R.H.
- VHC = Valved Holding Chamber
- Product may need to be replaced after 12 months of continuous use. Environmental conditions, storage and proper cleaning can affect product life span.

Indications for Use: The **AeroChamber MAX®** Valved Holding Chamber ("VHC") is intended to be used by patients who are under the care or treatment of a licensed health care professional or physician. The device is intended to be used by these patients to administer aerosolized medication from most pressurized Metered Dose Inhalers, prescribed by a physician or health care professional. The intended environments for use include the home, hospitals and clinics.

Rx Only

LATEX FREE

AeroChamber MAX®

Valved Holding Chamber with **Flow-Vu®** Indicator
and Large **ComfortSeal®** Mask



monaghan™

Manufactured by: Monaghan Medical Corp.
5 Latour Ave., Suite 1600 Plattsburgh, NY 12901
For additional information visit www.monaghanmed.com

© 2004 Monaghan Medical Corp.

™ Trademarks and © Registered Trademarks. Printed in USA. P/N 80702-06 1/10