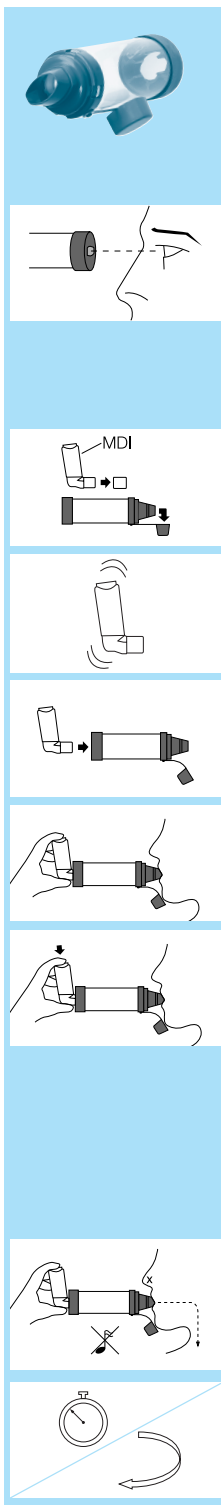


Directions for Use (Single Patient Use Only)



ENGLISH

Before use, this product should be cleaned in accordance with the instructions. Ensure these instructions and the instructions supplied with the Metered Dose Inhaler (MDI) have been read.

Carefully examine the product for damage, missing parts or foreign objects. Remove any foreign objects prior to use. The product should be replaced IMMEDIATELY if there are any damaged or missing parts. If necessary, use the Metered Dose Inhaler (MDI) alone until a replacement is obtained. If the patient's symptoms worsen, please seek immediate medical attention.

Remove cap(s) from the MDI and chamber.

Shake the MDI immediately before each use as per the instructions supplied with the MDI.

Insert the MDI into the backpiece of the chamber.

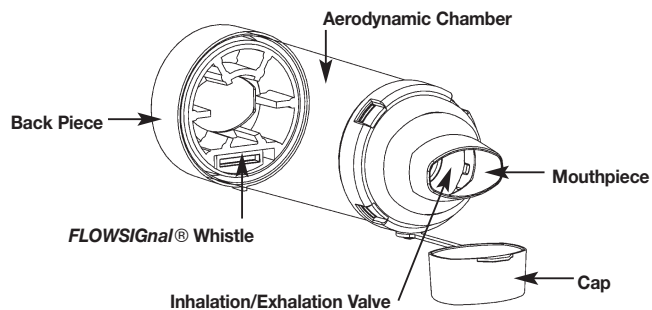
Put mouthpiece into mouth and close lips around it to ensure an effective seal.

Breathe out gently and depress the MDI at the beginning of a slow inhalation. Breathe in slowly and deeply through the mouth until a full breath has been taken. Hold breath for 5-10 seconds, if possible. Otherwise, keep lips tight on the mouthpiece to maintain seal for 2-3 breaths after the MDI is depressed.

Administer one (1) puff at a time.

Slow down inhalation if you hear the **FLOWSiGnal®** Whistle sound.

Follow instructions supplied with the MDI on how long to wait before repeating steps 3-7 as prescribed.

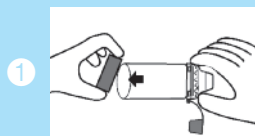


Cleaning Instructions



ENGLISH

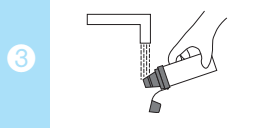
This product should be cleaned before first use then weekly.



Remove the Backpiece only. Do not disassemble the product beyond what is recommended or damage may result.



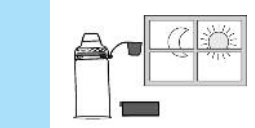
Soak the parts for 15 minutes in a mild solution of liquid dish detergent and luke-warm clean water. Agitate gently.



Rinse mouthpiece only in water.



Shake out excess water from the parts and allow to air dry in a vertical position. Ensure parts are dry before reassembly. **Do not rub dry.**



To reassemble, press firmly to attach the Backpiece. The protective cap should always be placed on the mouthpiece when the product is not in use.

AeroChamber[®] Plus[®]

Valved Holding Chamber with **FLOWSiGnal®** Whistle



monaghan™

Monaghan Medical Corporation, 5 Latour Ave., Suite 1600, Plattsburgh, NY 12901
www.monaghanmed.com

© 1999, 2002 Monaghan Medical Corporation
™ and ® are trademarks and registered trademarks of Monaghan Medical Corporation or an affiliate of Monaghan Medical Corporation.
This device was Made in the USA from US and Canadian parts.
Part Number: 76071-10, AWC34-09 Revision: 03/11

Cautions

- To ensure proper performance this product should only be cleaned according to these instructions. DO NOT clean in dishwasher.
- Do not leave the chamber unattended with children.
- Federal (USA) law restricts the sale of this device on or by the order of a physician.

Rx Only

Notes

- Storage and operating range 5° C - 40° C (41° F - 104° F) at 15 to 95% relative humidity.
- Product may need to be replaced after 12 months of use. Environmental conditions, storage and proper cleaning can affect product life span.
- THIS PRODUCT CONTAINS NO LATEX.
- THIS PRODUCT IS BPA FREE
- Do not share this medical device.
- VHC = Valved Holding Chamber

Indications for Use: This product is intended to be used by patients who are under the care or treatment of a physician or licensed health care professional. The device is intended to be used by these patients to administer aerosolized medication from most pressurized Metered Dose Inhalers. The intended environments for use include the home, hospitals and clinics.